

ALTUS

Performance	Imperial	Metric
Never Exceed Speed (V <sub>ne</sub> )	<b>146</b> knots	<b>270</b> km/h
Maneuvering Speed (V <sub>a</sub> )	<b>97</b> knots	<b>180</b> km/h
Rough Air Speed (V <sub>ra</sub> )	<b>121</b> knots	<b>225</b> km/h
Range	<b>860</b> NM	<b>1600</b> km
Fuel tank	<b>26.4</b> gallon	<b>100</b> liter
Take off distance	<b>490</b> feet	<b>150</b> m
Climb rate	<b>1400</b> ft/min	<b>7</b> m/s
Luggage	<b>110</b> pounds	<b>50</b> kg
Maximum TOW	<b>1320</b> pounds	<b>600</b> kg
Wingspan	<b>36/49</b> feet	<b>11/15</b> m
Load factor	<b>+5.3 / -2.65</b> G	
Engine	<b>ROTAX 912</b> ULS	

“Made in **Europe**”

Sky is my Home

FEATURES

- **5 FAI World Records**
- **Designed for friendly flight and stall characteristics**
- **New generation airfoil**
- **Easy maintenance**
- **Exclusive custom interior and exterior designs**
- **Variable wingspans**
- **XXL Luggage compartment**  
(place for 2 electric scooters)



“Assembled in **Hungary**”

ALTUS



Sky is my Home



# ALTUS

## CREDO

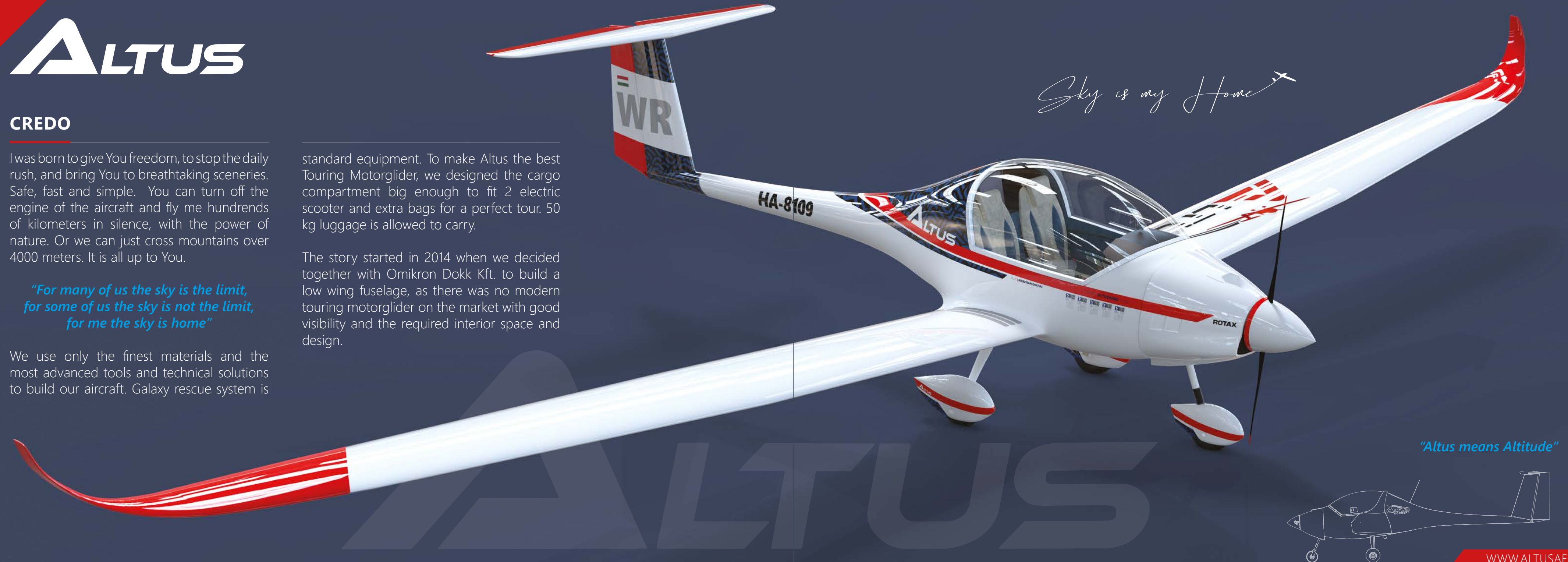
I was born to give You freedom, to stop the daily rush, and bring You to breathtaking sceneries. Safe, fast and simple. You can turn off the engine of the aircraft and fly me hundreds of kilometers in silence, with the power of nature. Or we can just cross mountains over 4000 meters. It is all up to You.

*"For many of us the sky is the limit,  
for some of us the sky is not the limit,  
for me the sky is home"*

We use only the finest materials and the most advanced tools and technical solutions to build our aircraft. Galaxy rescue system is

standard equipment. To make Altus the best Touring Motorglider, we designed the cargo compartment big enough to fit 2 electric scooter and extra bags for a perfect tour. 50 kg luggage is allowed to carry.

The story started in 2014 when we decided together with Omikron Dokk Kft. to build a low wing fuselage, as there was no modern touring motorglider on the market with good visibility and the required interior space and design.



*"Altus means Altitude"*





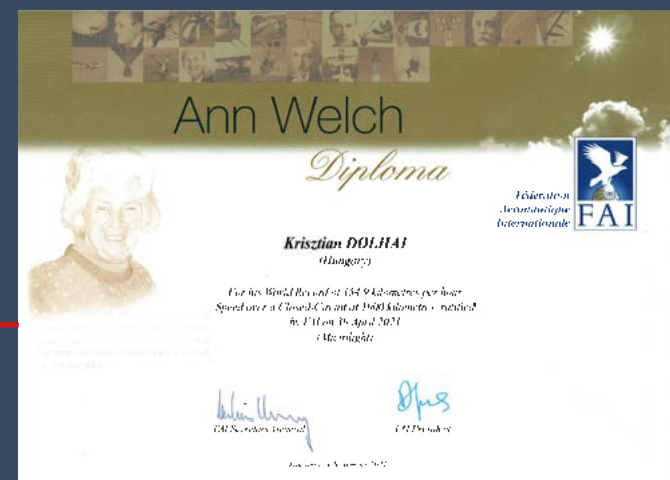
## DREAMER OF CONCEPT

The good aircraft have friendly flight and stall characteristics. Having nice performance in addition was the real challenge.

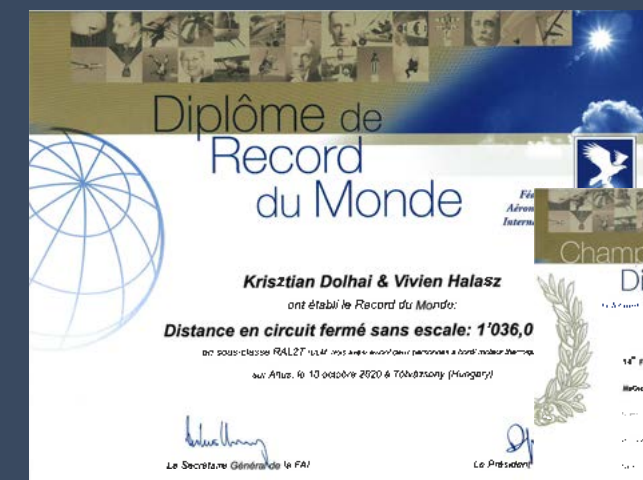
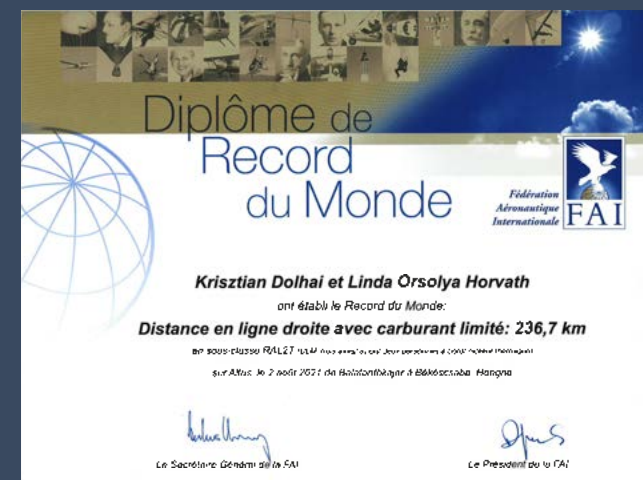
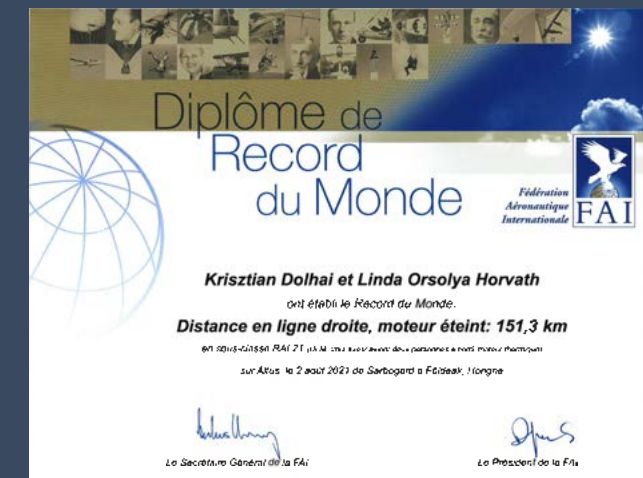
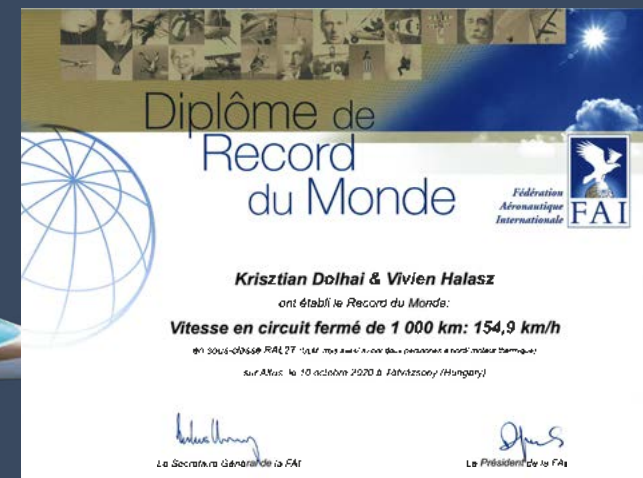
*Krisztian Dolhai*  
The dreamer of the concept

## PROFILE

- Vehicle design engineer
- Multiple FAI World Record Holder
- FAI European Microlight Champion
- FAI World Microlight Vice Champion
- FAI Ann Welch Diploma Owner



## FAI WORLD RECORDS AND ACHIEVEMENTS





Performance	Imperial	Metric
Never Exceed Speed (V <sub>ne</sub> )	<b>146</b> knots	<b>270</b> km/h
Maneuvering Speed (V <sub>a</sub> )	<b>97</b> knots	<b>180</b> km/h
Rough Air Speed (V <sub>ra</sub> )	<b>121</b> knots	<b>225</b> km/h
Range	<b>860</b> NM	<b>1600</b> km
Fuel tank	<b>26.4</b> gallon	<b>100</b> liter
Take off distance	<b>490</b> feet	<b>150</b> m
Climb rate	<b>1400</b> ft/min	<b>7</b> m/s
Luggage	<b>110</b> pounds	<b>50</b> kg
Maximum TOW	<b>1320</b> pounds	<b>600</b> kg
Wingspan	<b>36/49</b> feet	<b>11/15</b> m
Load factor	<b>+5.3 / -2.65</b> G	
Engine	<b>ROTAX 912</b> ULS	



## KEY FEATURES

- **Easily changeable** wing extensions (36/49 feet, 11/15 m)
- **5** FAI World Records
- Designed for **friendly** flight and stall characteristics
- **New** generation airfoil
- **Easy** maintenance
- **Exclusive** custom interior and exterior designs
- **XXL** Luggage compartment
- **GRS Rescue Parachute System** is standard equipment.
- **Cobra trailer** is available customised to Altus



# ALTUS

*"Which one would You choose"*

TRICYCLE

TAILDRAGGER



## ELECTRIC | SCOOTERS

There is no need to rent a car or call a taxi around smaller airports. We can use the two electric scooters that come with the plane as an option to get you conveniently into town or to your destination in the area.

The aircraft has a large baggage compartment with a load capacity of **50 kg (110 lbs)**, providing a comfortable ride for true touring pilots.

*"Scooting on the beach with my son at the weekend and flying home the next day was an unforgettable experience."*



2 ELECTRIC **SCOOTERS**

*"XXL Luggage Compartment"*



# ALTUS

## SAFETY ADVANTAGES

1. In the event of an engine breakdown, we can glide to the nearest safe airport. The ideal and safe arrival altitude is at least 300 metres to fly a school loop. Calculated with these parameters, for example, **flying at a cruising altitude of 2300 m**, it is sufficient to have **airports every 100 km on the route**.
2. Altus is still an advantage, as it **climbs at 7 m/s**, so during takeoff **you can reach a safe altitude very quickly**, while still above the runway, for the first 100-200 metres, after which you can comfortably return to the runway if the engine stops.

### AIRFILED-TO-AIRFILED SAFE DISTANCE ESTIMATION

In case of an engine cut off you can glide to the next safe airfiled.

Options	Imperial	Metric	Imperial	Metric
Cruising Altitude 1.	<b>7500</b> feet	<b>2300</b> m	<b>54</b> NM	<b>100</b> km
Cruising Altitude 2.	<b>4000</b> feet	<b>1300</b> m	<b>27</b> NM	<b>50</b> km
Cruising Altitude 3.	<b>2600</b> feet	<b>800</b> m	<b>13.5</b> NM	<b>25</b> km

*"Climbing to 7500 feet usually take only 5-6 minutes"*

*"Fast climbing and gliding capability of the aircraft greatly increases safety and provides a more relaxed route and touring experience."*



**Airport - A**

We arrive at an altitude of at least 300 metres



**Airport - B**

We arrive at an altitude of at least 300 metres

### AIRFILED-TO-AIRFILED SAFE DISTANCE

## EXTRA SAFETY BY GLIDING CAPABILITY

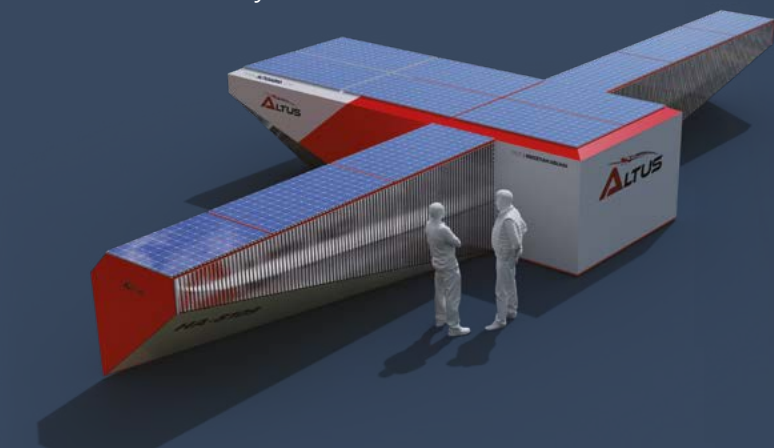
**NOTE:** The range of the glider in a given situation depends on the wind direction and speed, the terrain, the weight of the aircraft and the chosen airspeed, weather conditions etc.





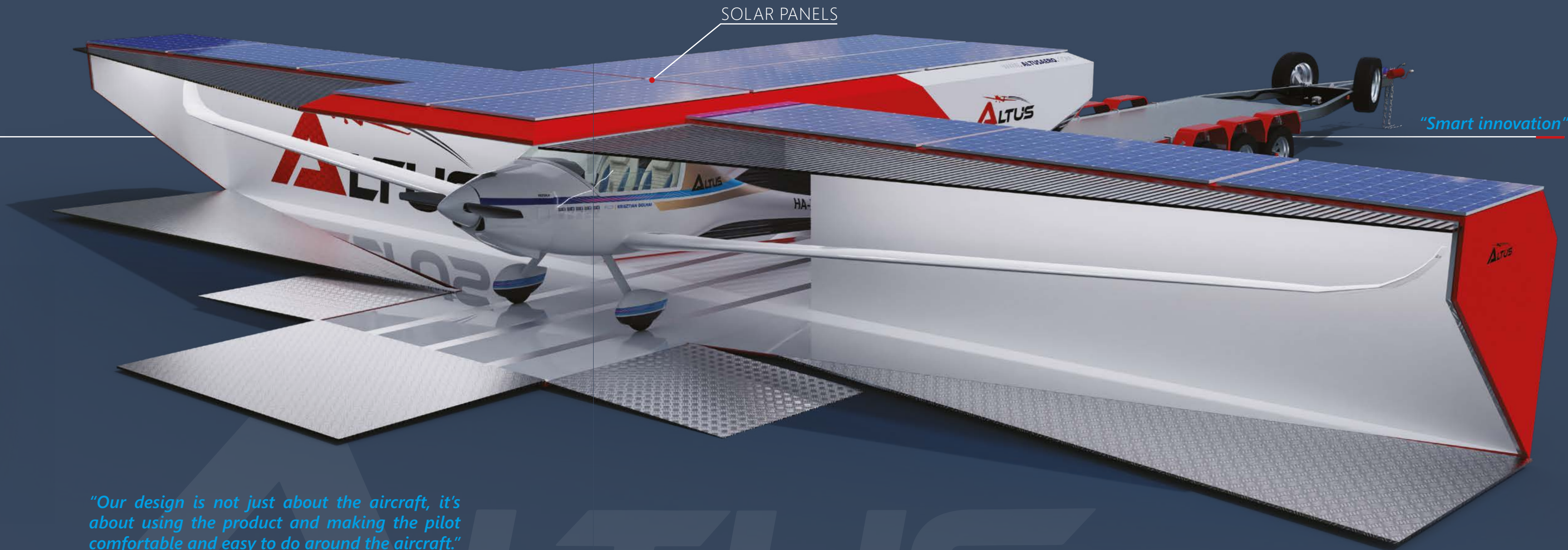
## SOLAR HANGAR | CONCEPT

The concept allows you to can optionally temper the hangar and keep the aircraft in a constant temperature range with air conditioning. The energy generated by the solar panels can be used not only for this purpose, but also for charging the electric scooters, and the aircraft's battery.



The hangar can be easily opened and closed and is weatherproof. It can also be used to conveniently store aircraft tools and maintenance equipment.

It can be moved by trailer. Installation is quick and easy.



- **COBRA** trailer is also available and customised to ALTUS
- We provide **exclusive** exterior design for our SOLAR HANGARS and Cobra trailers



# ALTUS



"Safety, Design and Innovation hand-in-hand."

## DESIGNERD FOR **FRIENDLY FLIGHT AND STALL CHARACTERISTICS**

We use only the finest materials and the most advanced tools and technical solutions to design and build our aircraft. Galaxy rescue system is standard equipment. To make Altus the best Touring Motorglider, we designed the cargo compartment big enough to fit 2 electric scooter and extra bags for a perfect tour. 50 kg luggage is allowed to carry. Thank to the excellent aerodinamical design, Altus has no intention to spin after stall, and recovering is smooth and fast.



 **econ**  
ENGINEERING



*Sky is my Home* ✈️



The ALTUS logo is displayed in a white, bold, sans-serif font. The letter 'A' is stylized with a triangular cutout on its left side. The logo is positioned in the upper left corner of the image, partially overlapping a red diagonal graphic element.

# ALTUS

## BORN TO **CROSSCOUNTRY FLIGHT**

Touring is a dream for many of us. To achieve this, we need a safe and powerful aircraft that can fly long distances efficiently and quickly. With the high glide ratio, we can easily reach any surrounding airport from cruising altitude, even in glider mode. The ALTUS offers a solution to this.





## RECREATIONAL FLYING

Flying only for fun is the dream of all pilots. Even if flying is a symbol of freedom, there are many strict rules and regulations to follow. Altus was born for recreational flying, where operating the aircraft shall take as little effort and focus as possible.

The pilot will have more time to concentrate on his other flight duties (Airspaces, Weather, Traffic), and of course to enjoy the breathtaking view from the sky.

The high stability, simple cockpit, fixed landing gear, and ground adjustable propeller makes Altus easy to fly.

*"Flying only for fun is the dream of all pilots."*

The side by side seat arrangement provides more direct communication and enables friends or guests to feel more comfortable. The high canopy position gives slightly more drag, but we decided for the best visibility.

You can taxi on the ground with the tailwheel version straight, no need for the S-turns to see what is in front of the aircraft. Double controls make tasting and learning of flight possible.

*Sky is my Home* 





# ALTUS

"Good design is essential."

## DESIGN CUSTOMIZATION

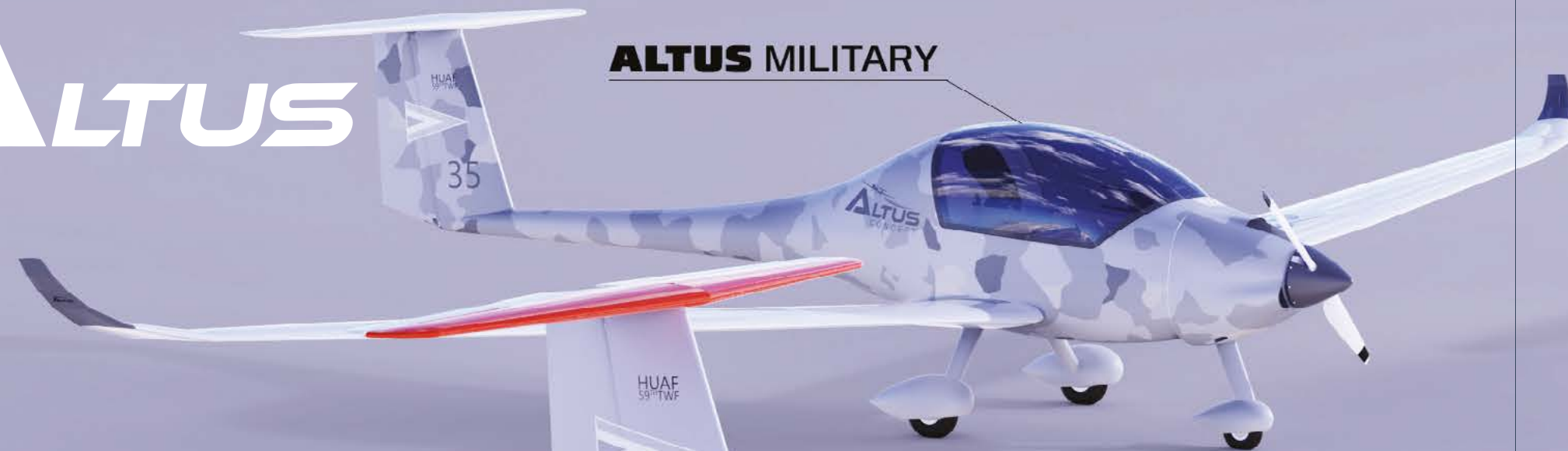
Each aircraft can have a unique exterior and interior design. You can choose from hundreds of leathers, alcantara and threads. Our award-winning design team will help you let your imagination soar.





# ALTUS

**ALTUS MILITARY**



**ALTUS DRONE**



**ALTUS TRAINER**



*Sky is my Home* ✈️





## EASY | MAINTENANCE

Manufacturer Customer support is very important to us. At the same time, we have made every effort during development to ensure that all components are as simple, durable and maintenance-free as possible. This design philosophy has many long-term benefits for Altus owners.

*"We fly to You!"*



*Sky is my Home* ✈️